



Simcoe Close

Earls Barton, Northamptonshire

oriordanbond
SALES & LETTINGS



Simcoe Close

Earls Barton
NN6 0FP

Price
£480,000

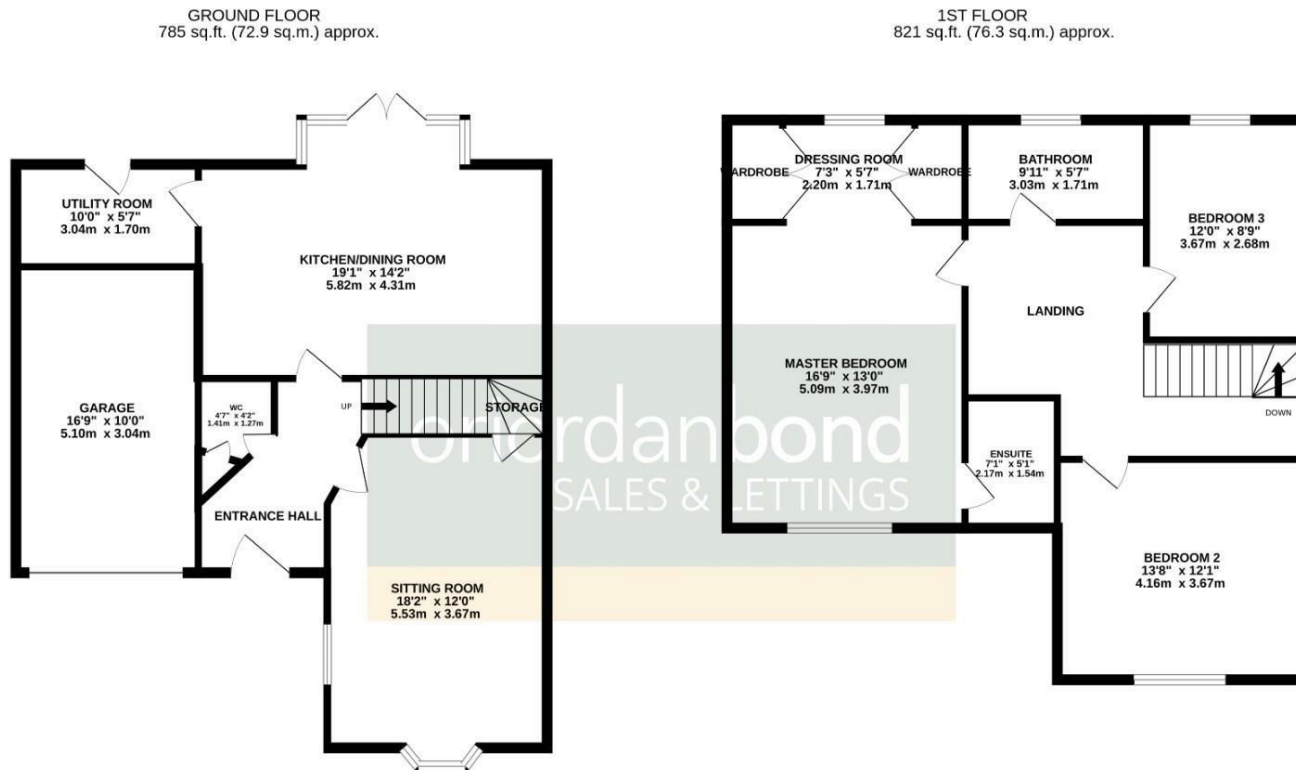
An outstanding spacious executive family home having been re-designed by the current owners. This Drummond designed home was formally a four bedroom property having been converted to a large three bedroom home with large formal master bedroom suite with dressing area and re-fitted en-suite shower room. Built by Messrs David Wilson Homes, this stylish property is located on the popular development of 'The Wickets' having undergone works to include new interior doors, Victorian style radiators, feature media wall, re-fitted bathroom, re-fitted en-suite shower room and landscaped south facing garden. This stunning home is offered for sale with no onward chain and located in quiet cul-de-sac.

Accommodation includes spacious entrance hall, cloakroom/wc, sitting room with media wall, good size kitchen/dining room/family room, oversized utility room, first floor landing, master bedroom measuring 16'9 x 13' with dressing area with fitted wardrobes and en-suite shower room, two further double bedrooms and a re-fitted four-piece family bathroom with stand alone bath and double shower. Outside is an open plan front garden with double width driveway leading to an internal garage with access to the side of the property. The good size south facing rear garden is designed and landscaped with entertainment in mind, being easy to maintain, with mature planting, patio area with pergola, second patio area to catch the late evening sun and laid with artificial law. Further benefits include double glazing and gas radiator heating. (A/1458/M)

- Spacious three double bedroom executive detached home
- Dressing area and en-suite to master bedroom
- Good size kitchen/dining room/family room
- Landscaped rear garden
- Driveway and integral garage
- No onward chain







TOTAL FLOOR AREA : 1607 sq.ft. (149.3 sq.m.) approx.

Whilst every attempt has been made to ensure the accuracy of the floorplan contained here, measurements of doors, windows, rooms and any other items are approximate and no responsibility is taken for any error, omission or mis-statement. This plan is for illustrative purposes only and should be used as such by any prospective purchaser. The services, systems and appliances shown have not been tested and no guarantee as to their operability or efficiency can be given.
Made with Metropix ©2025



Additional information

- Council Tax Band: E
- Energy Efficiency Rating: B

Viewing

Viewing strictly by appointment – details below

Disclaimer

O’Riordan Bond Estate Agents Limited has not tested apparatus, equipment, fittings or services and so cannot verify they are in working order. The buyer is advised to obtain verification from their solicitor or surveyor.

O’Riordan Bond Earls Barton Sales

01604 810088

earlsbarton@oriordanbond.co.uk

